

Hard Disk Calculator

Before actual recording, the Hard Disk Calculator allows you to know the required hard disk space and frame size for different types of codecs and quality.

1. Click the **Configure** button, point to **Video Attributes**, and then click **Advanced**. The Advanced Video Attributes dialog box appears.
2. Click the **HDD Calculator** tab at the right bottom. The HDD Calculator dialog box appears.

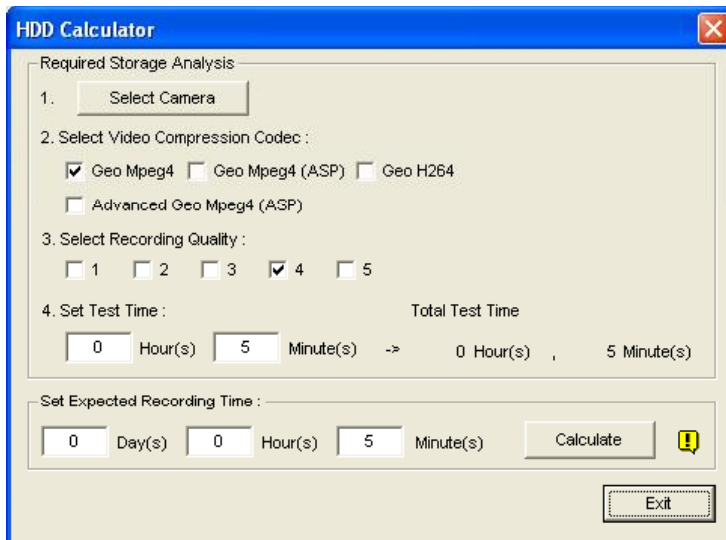


Figure 1-88

- **Select Camera:** Select cameras to be used for recording.
- **Select Video Compression Codec:** Check the desired codec(s) to be used for recording. You can choose more than one codec to compare their performance.
- **Select Recording Quality:** Check the desired quality value(s) for recording. You can choose more than one quality value for comparison.
- **Set Test Time:** The system will process a real-time test recording based on the time you set. For example, if you enter 24 hours here, it will take more than one day to do the test recording. So avoid entering the longer test time to save you time.
- **Set Expected Recording Time:** Enter the time you wish for recording.

3. Click the **Calculate** tab to see the result.

Note: A calculation difference by $\pm 5\%$ from actual disk usage is expected.